

LL7A Series Limited Switch 系列行程开关

产品性能 Performance

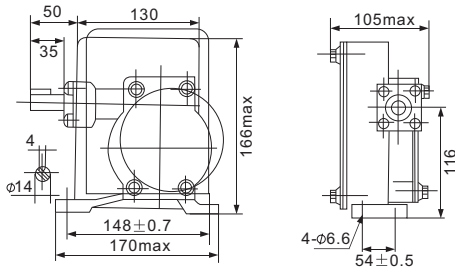
适用于交流50-60Hz; AC380B; DC220V; 电流20A的电器线路中, 作为起重机限制提升机构的行程; 亦可作自动化系统或电力拖动装置的终端开并。符合GB14048.5-2001标准。

It is to service at the control circuit of AC 50-60Hz, AC380V, DC220V and current of 20A to limit the travel of lift mechanism in crane or serve as terminal switch of automatic system or electrical drive device. It complies with the standard of GB14048.5-2001

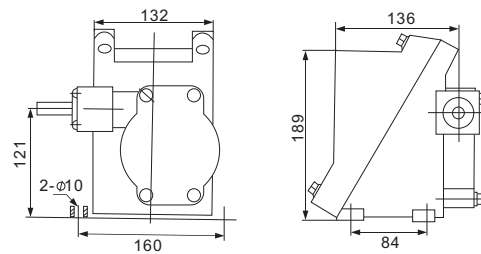
主要技术数据 Main technology data

型号 type	回路数 Circuit number	传动比 Drive ratio	额定电流 Rated current	闭合电流 colsed current
LL7A-1	1	1:50	20A	100A
LL7A-1S				
LL7A-2	2	1:50	20A	100A
LL7A-2S				

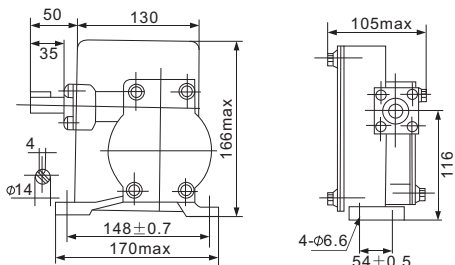
LL7A-1
LX7-1



LL7A-2
LX7-2



LL7A-1S
LX7-1S



LL7A-2S
LX7-2S

